

# EXCAVATOR BUCKET

## **STANDARD BUCKET**



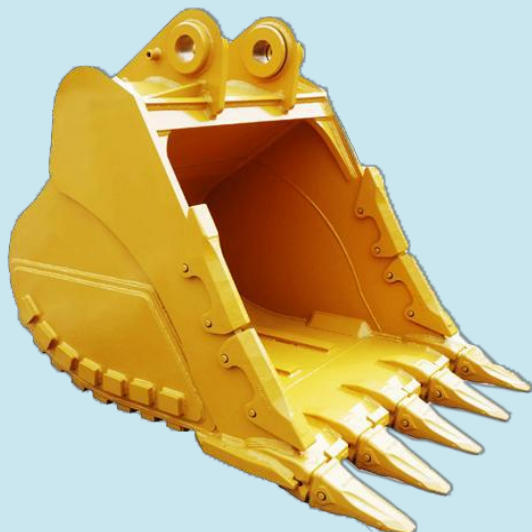
Used for low-impact, easier digging materials such as common earth, sand, and clay. Double radius design to minimize surface traction and to maximize life time efficiency.

## **HEAVY-DUTY BUCKET**



Used for light ditching and trenching , medium level stress, sand and gravel moving.

## **EXTRA HEAVY-DUTY BUCKET**



Used for hi-impact application , stone quarry, Demolition, Concrete removing, tough trenching ...

# EXCAVATOR BUCKET

## *SMOOTH BUCKET*



Cosmetic treatment during landscaping

## *SKELETON BUCKET*



## *RIPPER*



### Product Features

1. Available for all maker's of excavators ( CAT, Volvo, Komatsu...)
2. Bucket sizes are 0.8~7 m<sup>3</sup> ( for 20 ~ 80 ton excavator)
3. Combination of bucket is possible ( ex : skeleton + heavy duty + size)
4. Material from General purpose to high level of AR steel are available.
5. Standard Leadtime is 2~3 months after PO .
6. Special discount for bucket sets.
  - Demolition ( extra heavy duty + skeleton + Ripper)
  - Landscaping ( heavy duty + smooth + skeleton)
7. Pin type mount is the standard.