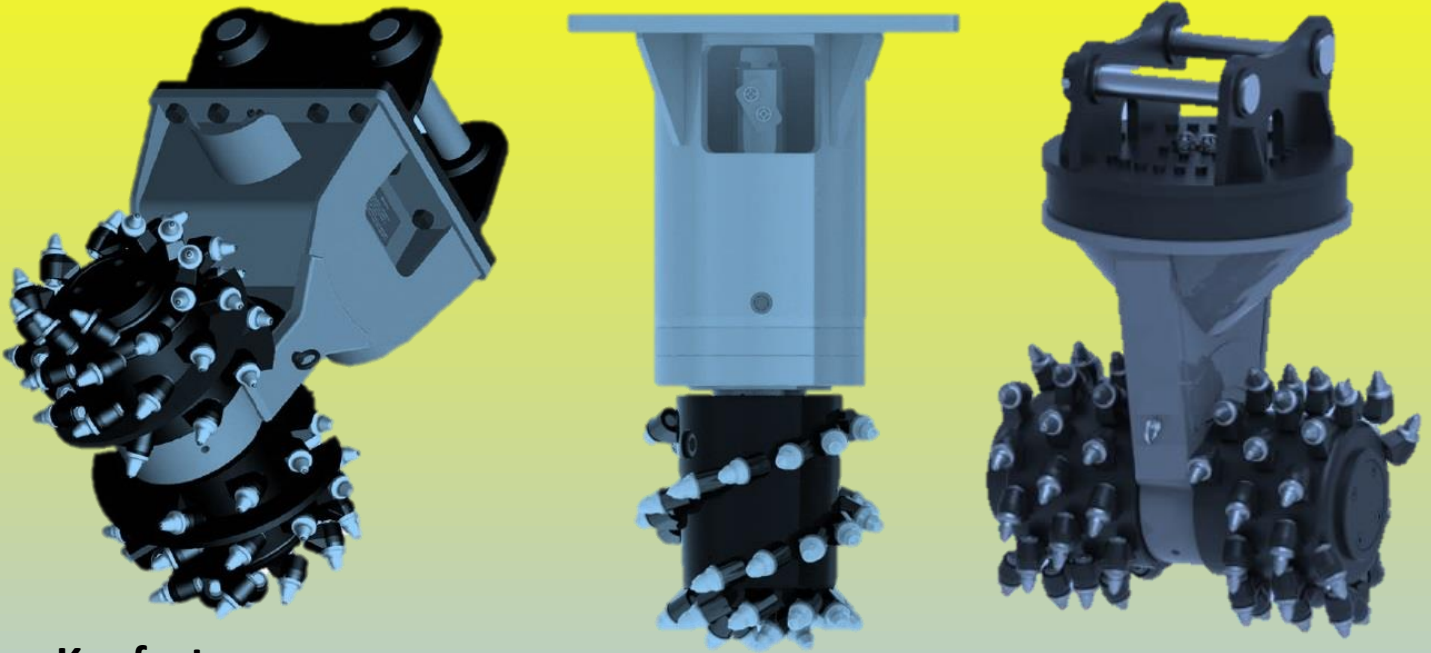


DRUM CUTTER

Built for tough

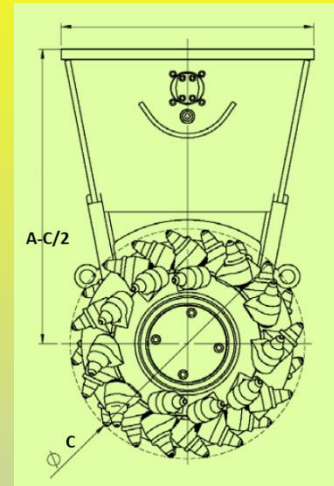
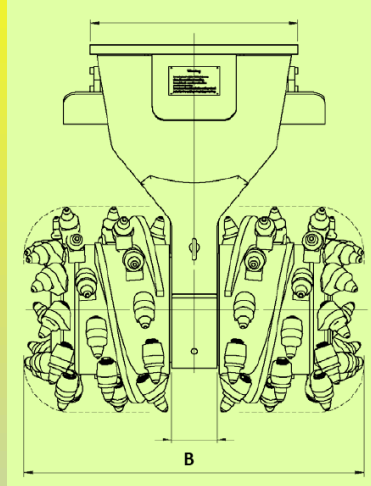
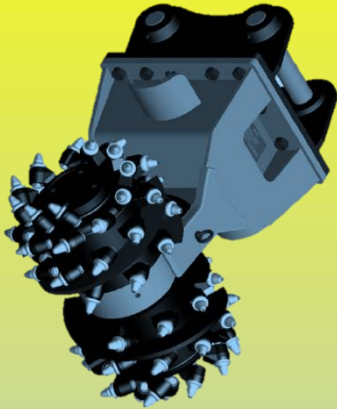


Key features

1. Low vibration and low impact to the main body.
2. Unique transmission mechanism for maximum cutting performance.
3. Low maintenance with the robust drive shaft and heavy-duty sealing.
4. Underwater operation without additional modification.
5. Wear-resistant tungsten carbide picks to withstand extreme stress and impact.
6. High torque hydraulic motor for high durability.
7. Robust housing with wear-resistant protection.
8. Lubrication-free slide ring seal system.
9. Easy replacement of picks at the site.
10. Rotational drum cutters gives a lot of job flexibility.



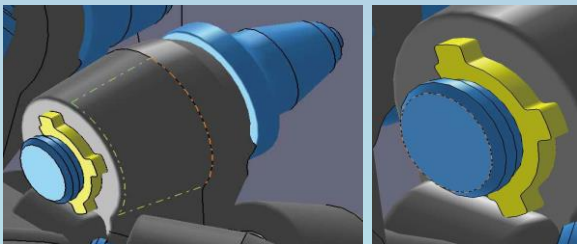
Twin Head , fixed type (DCTH)



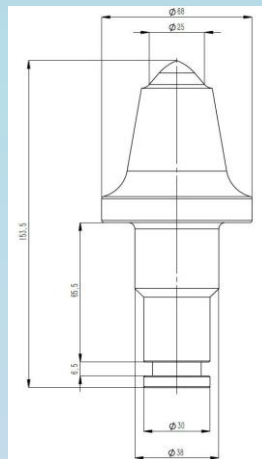
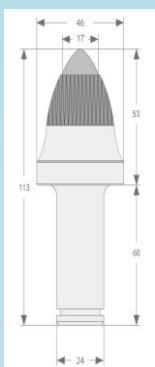
Standard Specification

Technical Data	UNIT	DCTH05	DCTH10	DCTH15	DCTH20	DCTH30	DCTH50
Carrier weight	ton	2.5-6	8-16	12-18	18-30	25-40	45-60
drum cutter weight	kg	215	275	595	1370	1400	2100
Oil flow rate	l/min	40-60	60-100	100-150	150-250	250-400	400-600
Max. operating pressure	bar	400	400	400	450	450	450
Rotational speed	rpm	100@50lpm	90@80lpm	85@120lpm	78@220lpm	76@320lpm	60@500lpm
Max.Torque@350bar	Nm	1875@320bar	3570@320bar	6320@320bar	17840@320bar	21376@320bar	33450@320bar
Length of Rock Grinder	A	1064	1064	1200	1519	1560	1680
Width of grinder head	B	600	600	830	910	1150	1350
Diameter of grinder head	C	440	440	475	570	675	780
Number of picks	PC	56	56	64	80	64	64
Pick shank diameter	mm	24	24	24	24	30	30

* Above specification can be changed without a previous notice for improvement in quality



Enhanced pick. With a unique ceramic wear-resistant layer, 50%~100% higher resistance than the general products on the market. These layers can also increase the rotation of the pick and improve eccentric wear conditions.



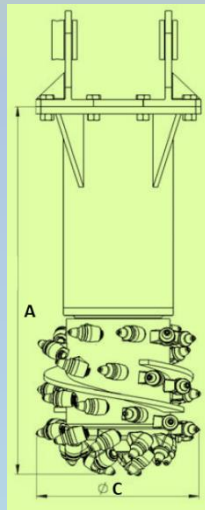
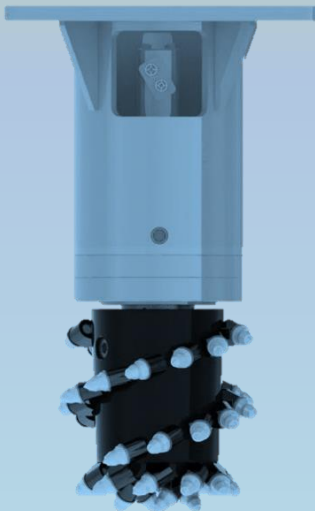
Twin head, rotating type (DCTHW)

· Standard Specification



Technical Data	UNIT	DCTHW20	DCTHW30
Carrier weight	ton	18-30	25-40
drum cutter weight	kg	1480	1752
Oil flow rate	l/min	200-320	320-460
Max. operating pressure	bar	450	450
Rotational speed	rpm	78@220lpm	76@320lpm
Max.Torque@350bar	Nm	17840@320bar	21376@320bar
Length of Rock Grinder	A	1402	1402
Width of grinder head	B	930	980
Diameter of grinder head	C	560	650
Number of picks	PC	92	64
Pick shank diameter	mm	24	30

Axial Head type (DCTV)



· Standard Specification

Technical Data	UNIT	DCTV05	DCTV10	DCTV20	DCTV30
Carrier weight	ton	2.5-6	8-15	18-30	30-50
drum cutter weight	kg	210	450	950	1484
Oil flow rate	l/min	40-70	100-150	120-220	200-350
Max. operating pressure	bar	200	270	320	400
Rotational speed	rpm	100@50lpm	95@100lpm	95@200lpm	83@375 lpm
Max.Torque@350bar	Nm	2200@320bar	6500@320bar	14500@320bar	22680@315bar
Length of Rock Grinder	A	1000	1,200	1610	1836
Diameter of grinder head	C	370	440	470	600
Number of picks	PC	28	40	50	45
Pick shank diameter	mm	24	24	24	24

* Above specification can be changed without previous notice for improvement in quality