

# Rotating multi-purpose Grapple (RMG)

- High one cylinder provide enough power for both legs.
  - Designed to handle various object by poking, pinching, grabbing, pulling.
  - Precise material grabbing is possible by linked and harmonized moving of jaw.
  - Durable with strong body and legs made by thick AR steel with quality welding.
  - Legs can be easily replaceable at job site.
  - Various type of leg design possible. This allow to grab any size of object precisely.
  - Managing piles, logs, waste, branches, tree trunks, hay stacks, stone, scrap metal.
  - Very useful for material handling and demolition by doing all kind of work from crushing to loading of debris into a truck.
- **Material Handling + Demolition + collection + cleaning + loading**



Tip closing type



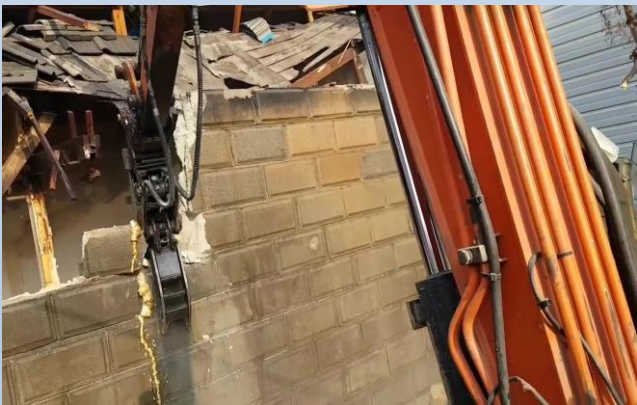
## Mini Multi-purpose Grapple



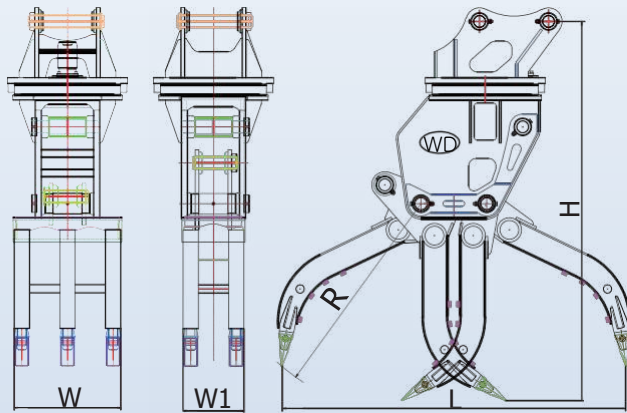
complete closing type

Best design for indoor demolition.  
Durable and powerful.  
Precise picking, poking and grabbing.  
Easily replaceable legs.

- **Material Handling + Demolition + collection + cleaning + loading**



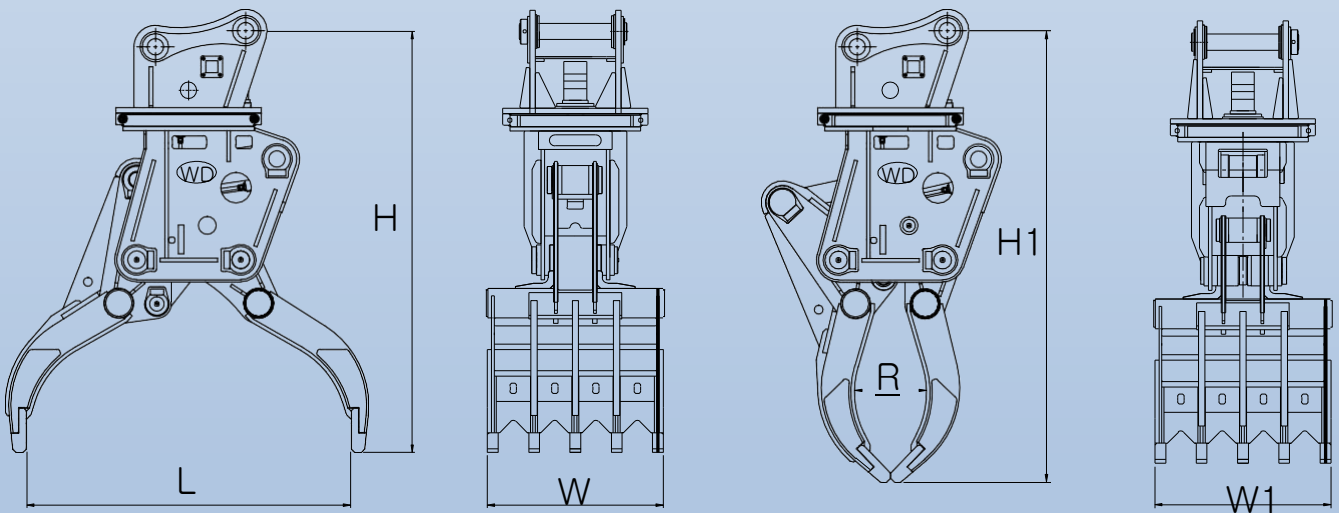
Complete closing type: best for scrap handling , sharp tip



Rotation  
 Required oil pressure: 300 bar  
 Required oil flow : 150 lpm

Class	Exca.(ton)	WT(kg)	L(mm)	H(mm)	W/W1(mm)	R(mm)	Oil Pressure /flow (kgf/cm2) / lpm	rotating torque (daNm) /speed(rpm)
RMG3	4~6	386	1300	1380	425/223	750	110~220 / 75	61 / 240
RMG6	9~13	1015	1890	2050	560/324	1230	150~240 / 150	160 / 285
RMG8	18~22	1820	2320	2550	717/410	1442	150~250 / 150	160 / 285
RMG10	28~32	2100	2850	2930	980/620	1680	170~250 / 200	160 / 285

Tip closing type: best for demolition, strong legs



Class	Exca.(ton)	WT(kg)	L(mm)	H/H1(mm)	W/W1(mm)	R(mm)	Oil Pressure / flow (kgf/cm2) / lpm	rotating torque (daNm) /speed(rpm)
RMGT8	20~24	1600	1800	2280 / 2430	800 / 700	300~400	250 / 200	160 / 285
RMGT10	27~36	2200	1800	2350 / 2500	1190 / 920	300~400	280 / 250	160 / 285

Rotation  
 Required oil pressure: 300 bar  
 Required oil flow : 150 lpm